

D 40

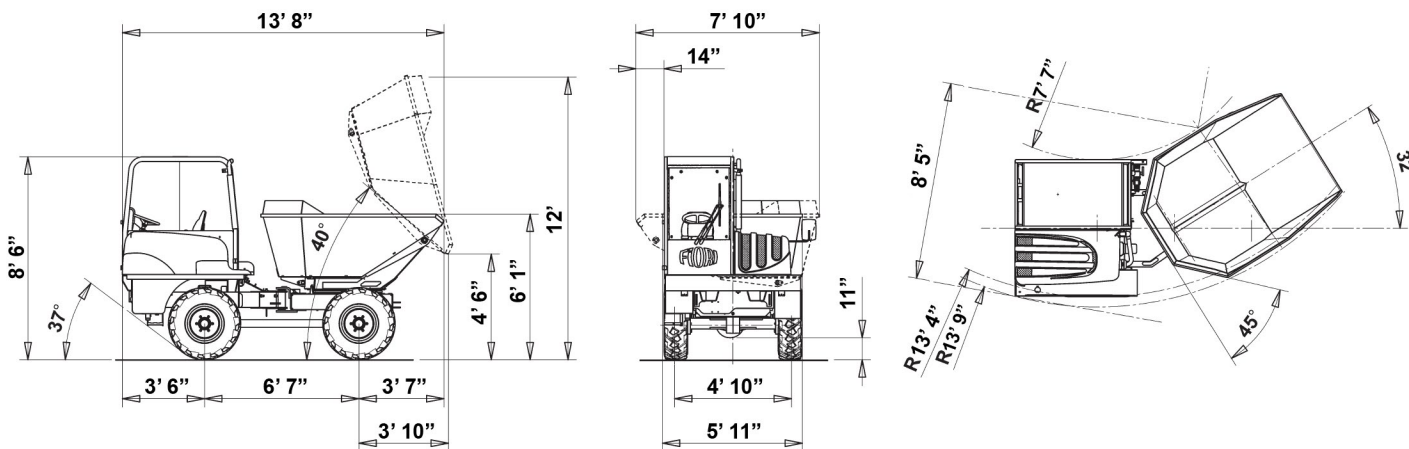


All pictures shown are for illustrative purposes only and may contain optional equipment.

DUMPER SYSTEM

This vehicle is extremely versatile, with unrivalled performance in restricted spaces such as narrow alleyways in city centres, lanes or alleys, or tunnels, and provides the ideal solution when driving reversibility, visibility and safe manoeuvrability are absolute necessities for transport of materials. This is the most compact vehicle of its segment (8,820 lbs.capacity, 180° pan rotation and three-way dumping). FIORI GROUP dumpers guarantee perfect traction and manoeuvrability on rough terrains, while also ensuring driving safety, flexible and user-friendly in both directions (forward and reverse).





DIESEL ENGINE	Tier 4 Final
Model :	KOHLER series KDI 1903 TCR
Type :	Turbo Common Rail (DOC)
Total displacement, no Cylinders:	1861cc - 3 in line
Injection :	Electronic control with direct injection
Cooling :	air water, dry air filter
Max. power :	42 kW (56 Hp)
Adj. power :	42 kW (2600 rpm)
Max. torque :	225 Nm a 1500 rpm
Alternator :	12V - 55 A

ELECTRIC SYSTEM

Battery: 12 V - 80 Ah (400 A)
Road light system, rear working lights.

4X4 FOUR-WHEEL DRIVE

Hydrostatic "automotive" transmission with variable displacement pump and variable displacement hydraulic motor with electro-hydraulic control, and reverse gear control on the steering wheel. Mechanical gearbox for "working speed" and "road transfer" speed, with mechanical control.

SPEED

4 forward gears 4 reverse gears

I° 0 - 3.1 mph 0 - 3.1 mph

II° 0 - 4.5 mph 0 - 3.1 mph

III° 0 - 8.8 mph 0 - 8.8 mph

IV° 0 - 12.6 mph 0 - 8.8 mph

Traction / weight ratio 55%

AXLES AND WHEELS

Front load-bearing, oscillating ($\pm 7^\circ$) with planetary reduction gears on the wheel hubs.

Rear load-bearing with planetary reduction gears on the wheel hubs and directly flanged gearbox.

Tires 12.0/75-18 12PR

BRAKES

Internal oil-bath disc service and emergency brakes acting on the 4 wheels, activation with pump on independent dual circuit.

Drum parking brake on the front axle with lever control.

STEERING

Assisted by means power steering acting on 2 half-frames by means of two opposed jacks.

EQUIPMENT HYDRAULIC SYSTEM

Gear pump

Max. flow rate: 9 gallons/min.

Maximum pressure: 2,466 psi

2 - elements distributor.

Aluminium heat exchanger for hydraulic oil cooling.

Pressurised closed-circuit intake with oil filter replaceable from the outside.

DUMP BODY

Dump body tilting by means of 1 double-acting jack. Orientation over 180° for trilateral unloading by means of two opposing jacks.

Struck capacity 2.62 cu yd

SAE heaped capacity 3.53 cu yd

CAB

Open cab designed according to ROPS & FOPS Lev. I criteria, windows on three sides. 180° pivoting driving post. Anatomic seat with flexible suspension and height adjustment, seat belts.

Driving and equipment controls with ergonomic arrangement.

LCD TV display with camera for rear visibility.

SERVICE REFILL CAPACITIES

Fuel tank: 12.2 gallons

Total hydraulic system capacity: .. 17.7 gallons

Engine oil: 8.9 liters

WEIGHTS

Operating weight: 7,495 lbs.

Max gross weight: 16,310 lbs.

load-carrying capacity: 8,820 lbs.